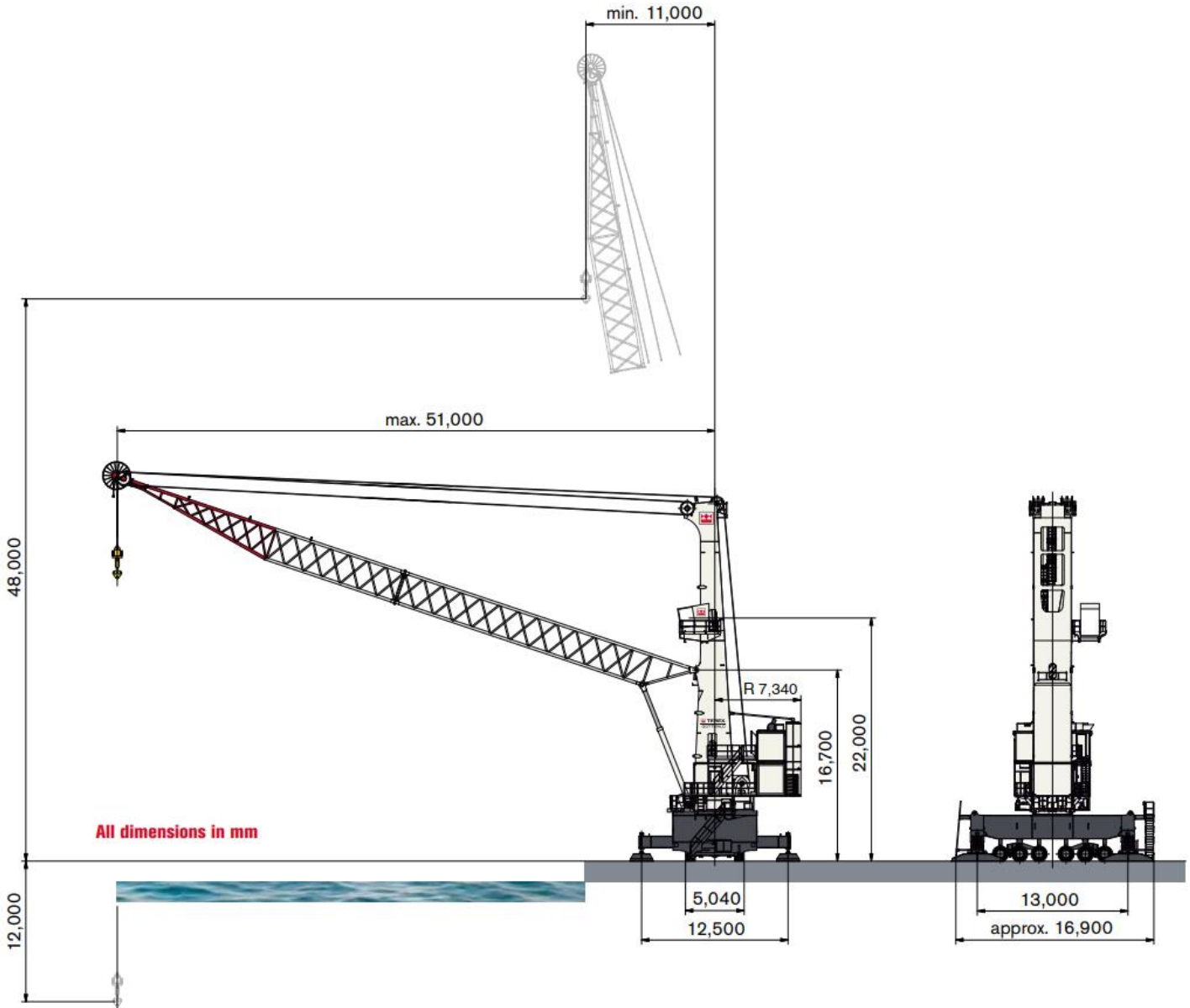
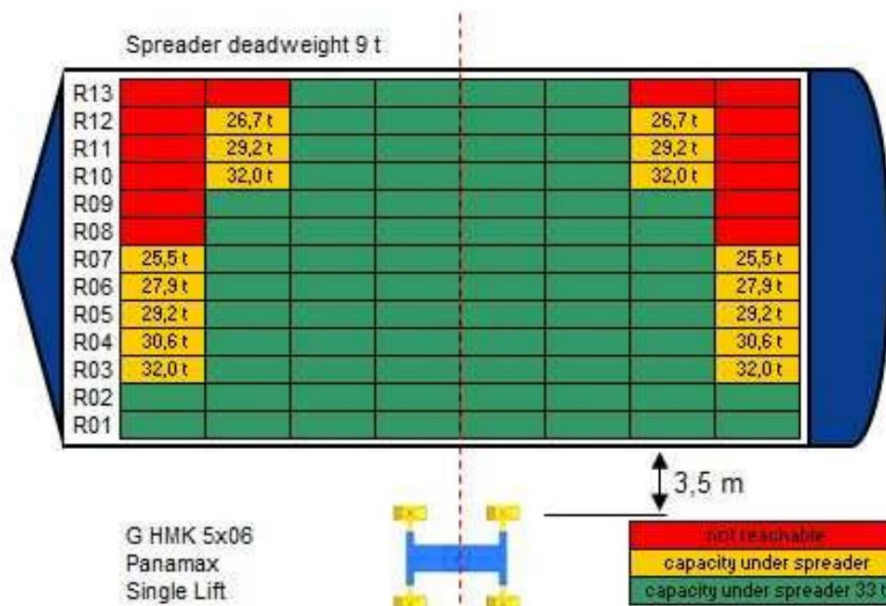




# CFFT



**Main dimensions of Terex Gottwald Model 5 crane, G HMK 5506 variant**

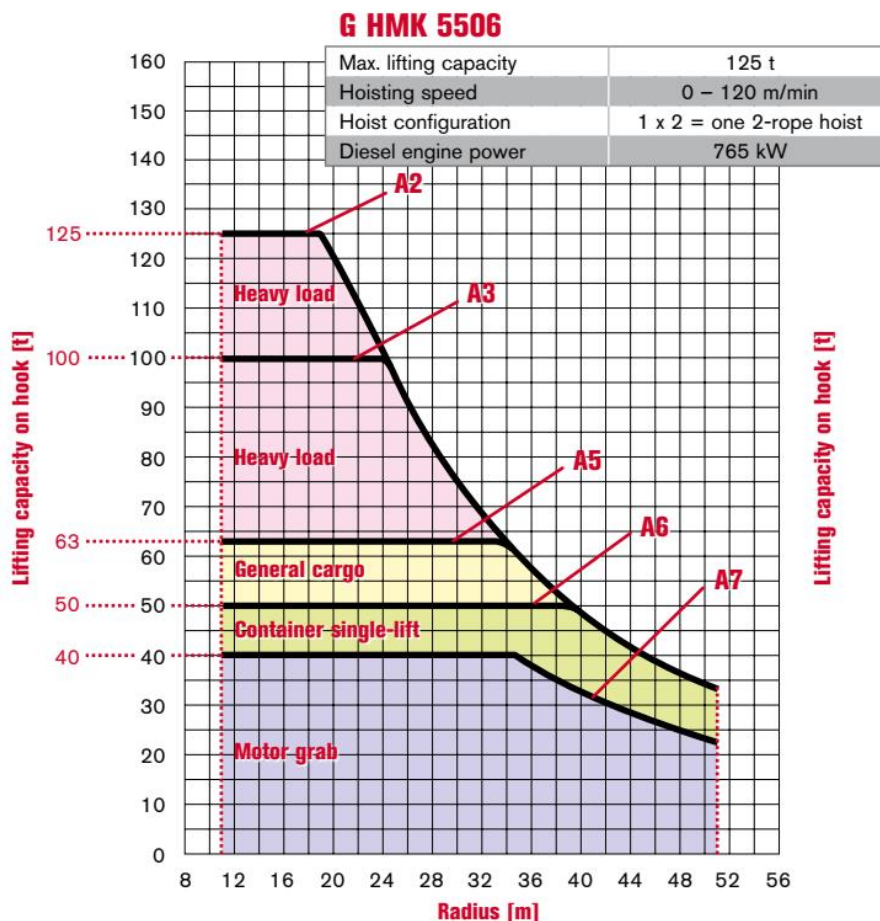


## Lifting capacities [t]

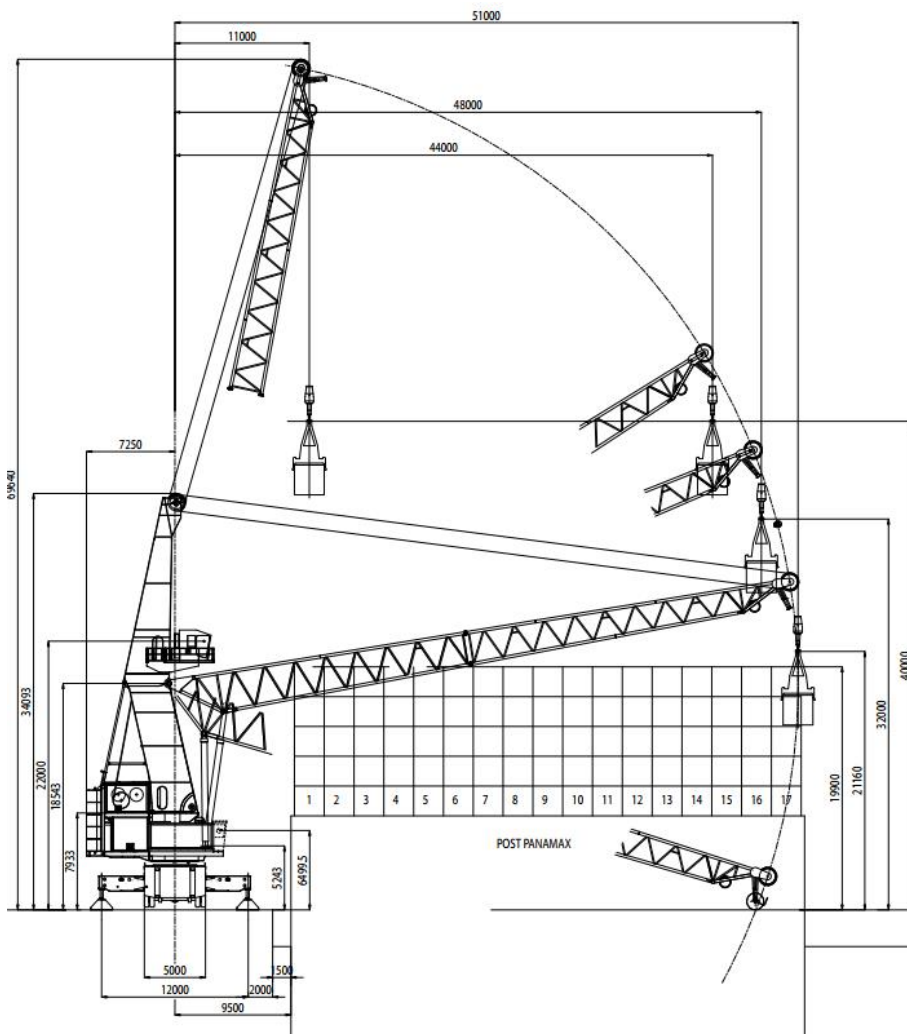
Operating modes	Heavy load	General cargo	Container	Motor grab
G HMK 5506	✓	✓	✓	✓
Radius [m]				
11 – 18	125.0	100.0	63.0	40.0
19	122.5	100.0	63.0	40.0
20	120.0	100.0	63.0	40.0
21	117.0	100.0	63.0	40.0
22	111.0	100.0	63.0	40.0
23	106.0	100.0	63.0	40.0
24	100.0	100.0	63.0	40.0
25	96.0	96.0	63.0	40.0
26	91.7	91.7	63.0	40.0
27	87.2	87.2	63.0	40.0
28	82.9	82.9	63.0	40.0
29	78.9	78.9	63.0	40.0
30	75.2	75.2	63.0	40.0
31	71.8	71.8	63.0	40.0
32	68.7	68.7	63.0	40.0
33	65.9	65.9	63.0	40.0
34	63.0	63.0	63.0	40.0
35	60.3	60.3	60.3	38.8
36	57.8	57.8	57.8	37.5
37	55.5	55.5	55.5	36.2
38	53.3	53.3	53.3	34.9
39	51.3	51.3	51.3	33.6
40	49.3	49.3	49.3	32.0
41	47.5	47.5	47.5	31.1
42	45.7	45.7	45.7	30.8
43	44.1	44.1	44.1	29.5
44	42.5	42.5	42.5	28.7
45	41.0	41.0	41.0	27.9
46	39.6	39.6	39.6	27.1
47	38.2	38.2	38.2	26.2
48	36.9	36.9	36.9	25.5
49	35.7	35.7	35.7	24.4
50	34.5	34.5	34.5	23.5
51	33.3	33.3	33.3	22.5

Heavy load, general cargo and motor grab on hook. Container operation below spreader.

Single-lift spreader = 9 t



OUR 150t MOBILE HARBOUR CRANE

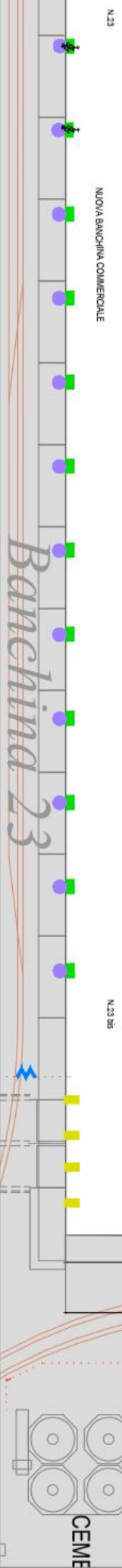
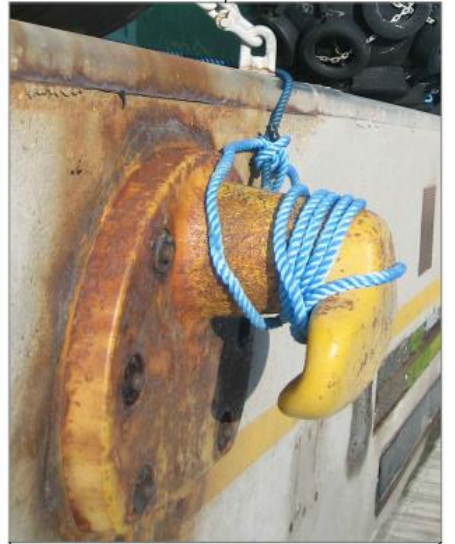
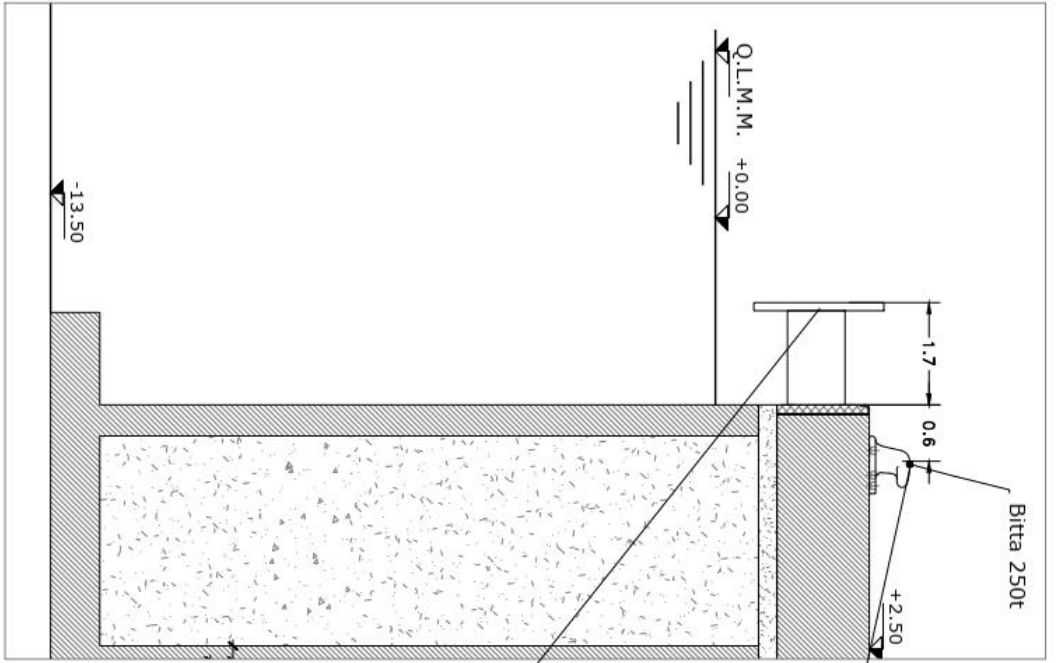


**MOBILE HARBOUR CRANE / GRU MOBILE PORTUALE**  
**MHC 5150**

**BOOM/BRACCIO 51.5 m - COUNTERWEIGHT/CONTRAPPESO 135 t**

L RADIUS (m)	I ANGLE (°)	H (m) ↑ ↓	CAPACITIES HEAVY LIFTING (t) FEM A3	CAPACITIES GENERAL CARGO (t) FEM A6	CAPACITIES GRAB USE (t) FEM A7
L RAGGIO (m)	I ANGOLO (°)	H (m) ↑ ↓	PORTATE USO PESANTE (t) FEM A3	PORTATE USO INTENSO (t) FEM A6	PORTATE USO BENNA (t) FEM A7
11.0	77.9	40.0	150.0	65.0	60.0
12.0	76.7	40.0	150.0	65.0	60.0
14.0	74.4	40.0	150.0	65.0	60.0
16.0	72.1	40.0	150.0	65.0	60.0
18.0	69.8	40.0	150.0	65.0	60.0
20.0	67.4	40.0	145.0	65.0	60.0
22.0	64.9	40.0	130.5	65.0	60.0
24.0	62.4	40.0	117.5	65.0	60.0
26.0	59.9	40.0	106.5	65.0	60.0
28.0	57.3	40.0	97.5	65.0	60.0
30.0	54.6	40.0	89.5	65.0	60.0
32.0	51.8	40.0	82.5	65.0	60.0
34.0	48.9	40.0	76.5	65.0	55.5
36.0	45.9	40.0	71.0	65.0	51.5
38.0	42.7	40.0	66.5	63.0	48.0
40.0	39.4	40.0	62.0	59.5	45.0
42.0	35.7	40.0	58.0	56.0	42.5
44.0	31.7	40.0	54.5	53.0	40.0
46.0	27.2	32.0	51.0	50.0	38.0
48.0	21.8	32.0	47.5	47.0	36.0
50.0	14.7	21.0	44.5	44.5	34.0
51.0	9.3	21.0	43.0	43.0	33.0

- NOTE
- A) Max. height under hook "H" is calculated with load linearity.  
*L'altezza massima sottogancio "H" è considerata con linearità di carico.*
  - B) Radius "L" is intended from slewing centre to C/L of suspended load (ropes).  
*Il raggio "L" è inteso dal centro di rotazione al baricentro del carico sollevato (funi).*
  - C) Shown capacities are intended for crane perfectly positioned on outriggers, standard counterweight.  
*Le portate espresse sono intese con gru perfettamente stabilizzata e con contrappeso standard.*
  - D) Shown capacities are effective working capacities under hook.  
*Le portate espresse in tabella sono quelle effettive di lavoro sottogancio.*
  - E) The grab weight is included in shown capacities.  
*La portata uso benna è comprensivo del peso proprio benna.*
  - F) Capacities on wheels are prohibited.  
*Sono vietate portate su aomme.*



(-13.50)

Bitta 250t

Q.L.M.M. +0.00

-13.50

1.7

0.6

+2.50

Banchina 23

N.23 06

35.9

15.0

15.0

15.0

15.0

15.0

15.0

15.0

15.0

15.0

15.0

15.0

15.0

15.0

15.0

15.0

15.0

15.0

15.0

15.0

15.0

15.0

15.0

15.0

15.0

15.0

15.0

24.9

Banchina 24

N.24

300

STOCK E SIN

CEME